

BALDOR[®] • RELIANCE 

Product Information Packet

UCC5700

5-7HP,3450RPM,1PH,60HZ,184TZ,3634C,OPEN

Part Detail							
Revision:	AE	Status:	PRD/A	Change #:		Proprietary:	No
Type:	AC	Elec. Spec:	36WGW873	CD Diagram:	CD0127	Mfg Plant:	
Mech. Spec:	36F548	Layout:	36LYF548	Poles:	02	Created Date:	
Base:	RG	Eff. Date:	06-08-2018	Leads:	2#10 A PH,2#16 B PH 30" LG		Y

Specs			
Catalog Number:	UCC5700	Inverter Code:	Not Inverter
Enclosure:	OPEN	KVA Code:	C
Frame:	184TZ	Lifting Lugs:	No Lifting Lugs
Frame Material:	Steel	Locked Bearing Indicator:	Locked Bearing
Output @ Frequency:	7.000 HP @ 60 HZ	Motor Lead Quantity/Wire Size:	2 @ 10 AWG, A PH
	5.000 HP @ 60 HZ	Motor Lead Exit:	Pipe Or Pipe Adaptor
Synchronous Speed @ Frequency:	3600 RPM @ 60 HZ	Motor Lead Termination:	Flying Leads
Voltage @ Frequency:	230.0 V @ 60 HZ	Motor Type:	3634C
XP Class and Group:	None	Mounting Arrangement:	F1
XP Division:	Not Applicable	Power Factor:	97
Agency Approvals:	UR	Product Family:	General Purpose
	CSA	Product Type:	FARM DUTY
Auxillary Box:	No Auxillary Box	Pulley End Bearing Type:	Ball
Auxillary Box Lead Termination:	None	Pulley Face Code:	Standard
Base Indicator:	Rigid	Pulley Shaft Indicator:	Tapped & Key
Bearing Grease Type:	Polyrex EM (-20F +300F)	Rodent Screen:	Included
Blower:	None	Shaft Extension Location:	Pulley End
Current @ Voltage:	19.500 A @ 230.0 V	Shaft Ground Indicator:	No Shaft Grounding

Design Code:	-	Shaft Rotation:	Reversible
Drip Cover:	No Drip Cover	Shaft Slinger Indicator:	No Slinger
Duty Rating:	CONT	Speed Code:	Single Speed
Electrically Isolated Bearing:	Not Electrically Isolated	Motor Standards:	NEMA
Feedback Device:	NO FEEDBACK	Starting Method:	Direct on line
Front Face Code:	Standard	Thermal Device - Bearing:	NONE (OLD)
Front Shaft Indicator:	None	Thermal Device - Winding:	Normally Closed Thermostat
Heater Indicator:	No Heater	Vibration Sensor Indicator:	No Vibration Sensor
Insulation Class:	F	Winding Thermal 1:	None
		Winding Thermal 2:	None

Nameplate NP1279L										
CAT.NO.	UCC5700									
SPEC.	36F548W873									
HP	5-7 AIR OVER									
VOLTS	230									
AMP	19.5-29									
RPM	3450									
FRAME	184TZ			HZ	60			PH	1	
SER.F.	1.00			CODE	C		DES	-	CL	F
NEMA-NOM-EFF	79			PF	97					
RATING	40C AMB-CONT									
CC							USABLE AT 208V			
DE	6206			ODE	6205					
ENCL	OPEN			SN						

Nameplate NP1263L	
CAT.NO.	UCC5700
SPEC.	36F548W873
HP	5-7 AIR OVER
VOLTS	230
AMP	19.5-29
RPM	3450
FRAME	184TZ
HZ	60
PH	1
SER.F.	1.00
CODE	C
DES	-
CL	F
NEMA-NOM-EFF	79
PF	97
RATING	40C AMB-CONT
CC	USABLE AT 208V
DE	6206
ODE	6205
ENCL	OPEN
SN	

Parts List		
Part Number	Description	Quantity
SA035078	SA 36F548W873	1.000 EA
RA031105	RA 36F548W873	1.000 EA
OC3025F11	CYL OIL CAP 25MFD/370V	2.000 EA
HA6021A01SP	ADAPTOR, MACH	1.000 EA
51XB1016A07	10-16 X 7/16 HXWSSLD SERTYB	2.000 EA
11XW0832G06	#8-32 X 3/8, TAPTITE II, HEX WSHR SLTD	1.000 EA
HW3001B01	BRASS CUP WASHER, FOR #10 SCREW	1.000 EA
36EP3200A06	FR ENDPLATE, MACH	1.000 EA
HA1103A08	RODENT SCREEN, 36 FRAME, OPEN, FRONT END	1.000 EA
51XW1032A06	10-32 X .38, TAPTITE II, HEX WSHR SLTD S	4.000 EA
HW1000A10	#10 FLAT WASHER (SAE)	4.000 EA
HW4500A19	1/4-28X1/4 SLOTTED PLUG F/S	2.000 EA
HW5100A05	WVY WSHR F/205 & 304 BRGS	1.000 EA
36PE3201A03	FR/PU ENDPLATE, ASSEMBLY FOR ROUTING	1.000 EA
HA1103A10	RODENT SCREEN, 36 FRAME, OPEN, PULLEY EN	1.000 EA
51XW1032A06	10-32 X .38, TAPTITE II, HEX WSHR SLTD S	4.000 EA
HW1000A10	#10 FLAT WASHER (SAE)	4.000 EA
HW4500A19	1/4-28X1/4 SLOTTED PLUG F/S	2.000 EA
10XN2520A20	1/4-20X 1 1/4 HEX HD X	2.000 EA
HW1001A25	LOCKWASHER 1/4, ZINC PLT .493 OD, .255 I	2.000 EA
XY2520A12	1/4-20 HEX NUT, DIRECTIONAL SERRATIONS	4.000 EA
HW2501E18	KEY, 1/4 SQ X 2.000	1.000 EA
HA7000A02	KEY RETAINER RING, 1 1/8 DIA, 1 3/8 DIA	1.000 EA
85XU0407S04	4X1/4 U DRIVE PIN STAINLESS	2.000 EA

Parts List (continued)		
Part Number	Description	Quantity
LB1001	LABEL, GREASE-EXXON POLYREX EM	1.000 EA
MJ1000A02	GREASE, POLYREX EM EXXON (USe 4824-15A)	0.050 LB
LD5000A24	LEAD ASSY, ML1400DF10 W/#10 RING 12"	1.000 EA
HA3101A25	THRUBOLT 1/4-20 X 11.000 OHIO ROD	4.000 EA
MG1025C02	WILKOFAST SG, 787.105, TAN	0.022 GA
MP1002A24	6" X 16" .65 MIL. CLEAR PLASTIC BAG	1.000 EA
LB1119N	WARNING LABEL	1.000 EA
LC0127	CONNECTION DIAGRAM	1.000 EA
NP1279L	ALUM FARM DUTY UL CSA CC	1.000 EA
NP1263L	AUX, GP, ALUM, CC, LASER ETCHED	1.000 EA
36PA1000	PKG GRP, PRINT PK1016A06	1.000 EA
MN416A01	TAG-INSTAL-MAINT no wire (1200/bx) 5/18	1.000 EA
FE-0000001	ZRTG FE ASSEMBLY	1.000 EA

Accessories		
Part Number	Description	Multiplier
36-3403	C FACE KIT	A8
36EP1405A09SP	D-FLANGE KIT	A8

AC Induction Motor Performance Data

Record # 10868 - Typical performance - not guaranteed values

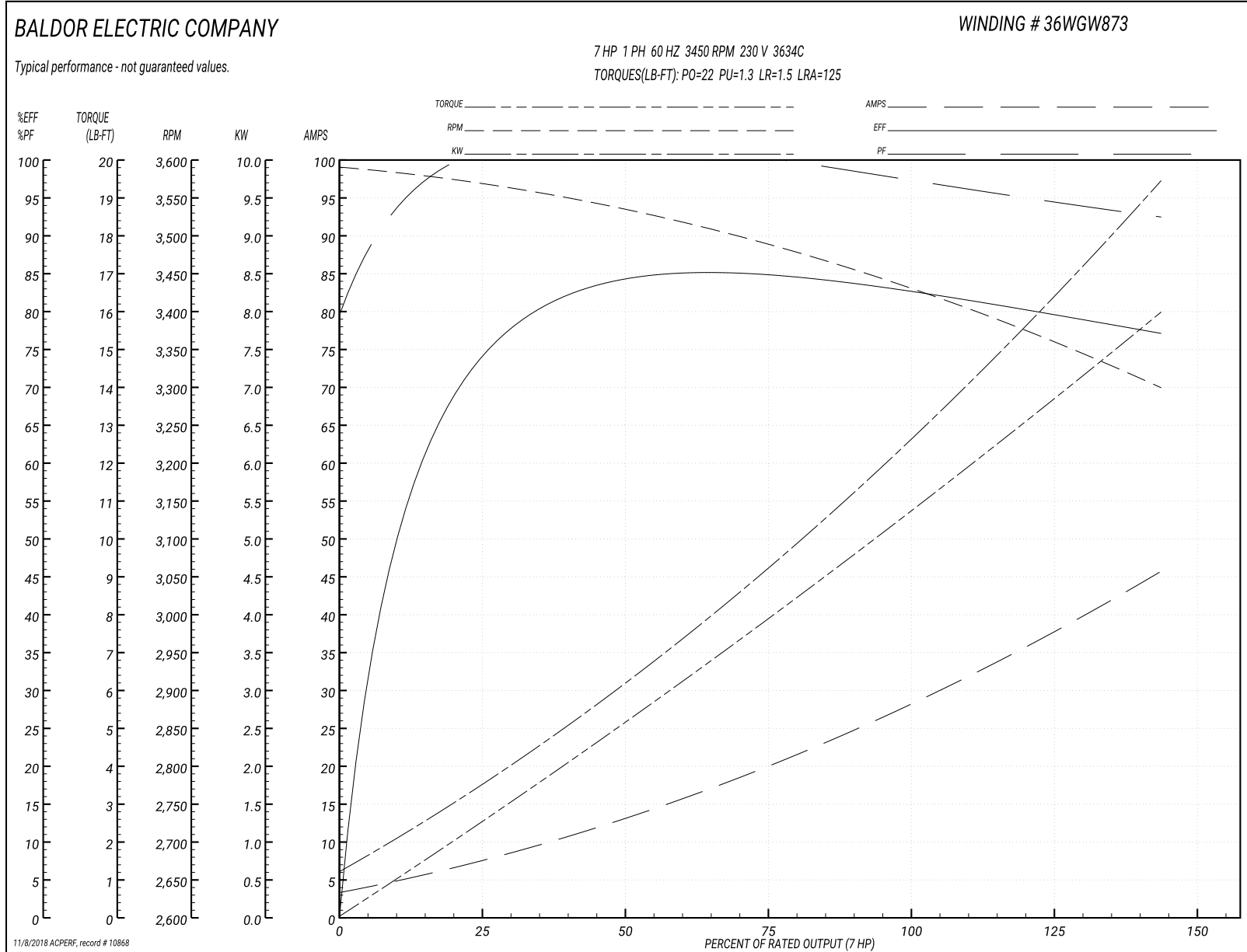
Winding: 36WGW873-R001	Type: 3634C	Enclosure: OPAO
-------------------------------	--------------------	------------------------

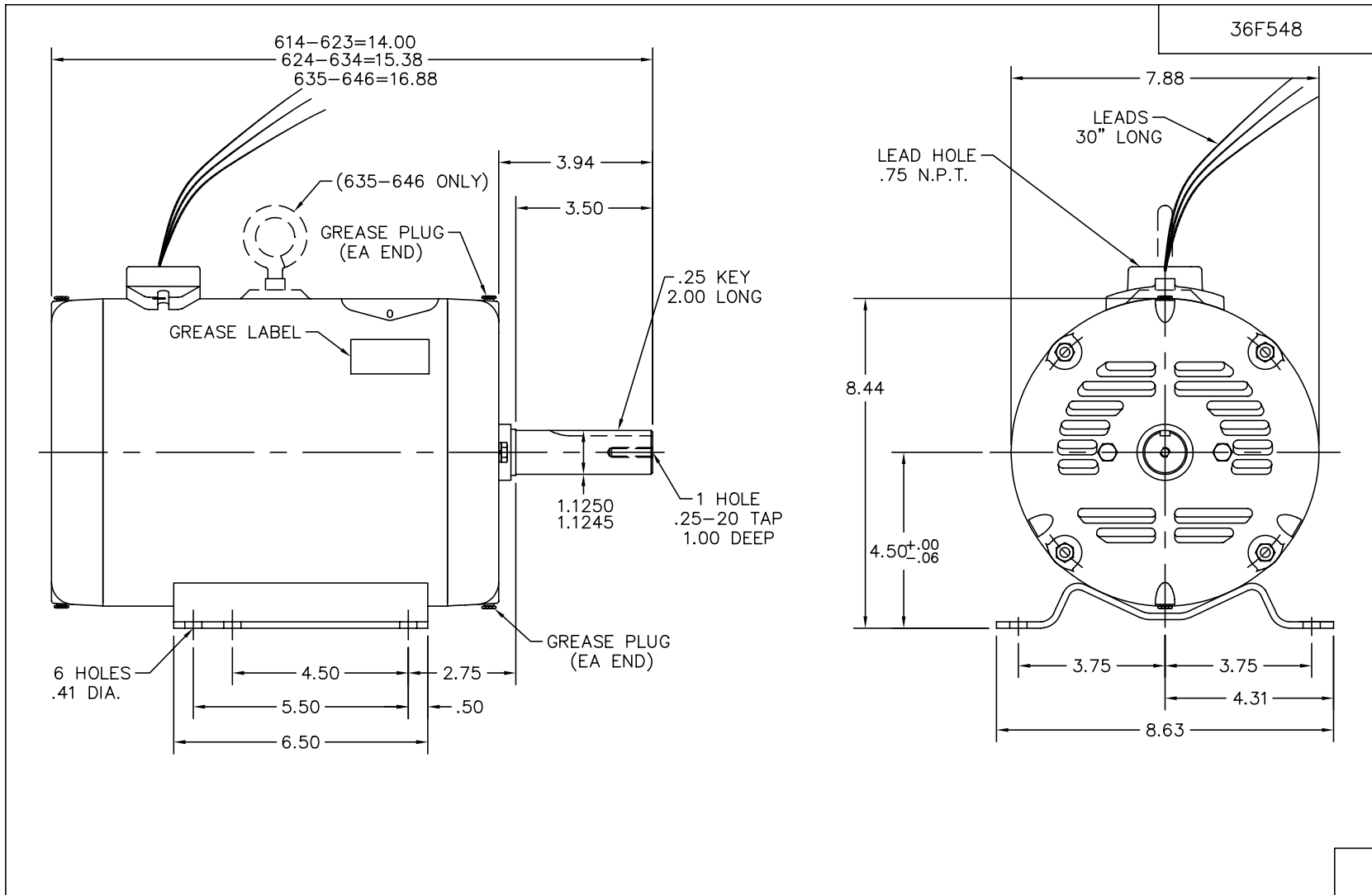
Nameplate Data				230 V, 60 Hz: Single Voltage Motor	
Rated Output (HP)	5-7 AIR OVER			Full Load Torque	10.7 LB-FT
Volts	230			Start Configuration	direct on line
Full Load Amps	19.5-29			Breakdown Torque	22 LB-FT
R.P.M.	3450			Pull-up Torque	1.3 LB-FT
Hz	60	Phase	1	Locked-rotor Torque	1.5 LB-FT
NEMA Design Code	-	KVA Code	C	Starting Current	125 A
Service Factor (S.F.)	1			No-load Current	2.9 A
NEMA Nom. Eff.	79	Power Factor	97	Line-line Res. @ 25°C	0.356 Ω A Ph 1.24 Ω B Ph
Rating - Duty	40C AMB-CONT			Temp. Rise @ Rated Load	

Load Characteristics 230 V, 60 Hz, 7 HP

% of Rated Load	25	50	75	100	125	150
Power Factor	97	99	99	98	97	96
Efficiency	72.2	82.5	84.6	83.7	81	76.3
Speed	3563	3527	3485	3437	3376	3291
Line amperes	8.1	14	20.5	27.7	36	46.5

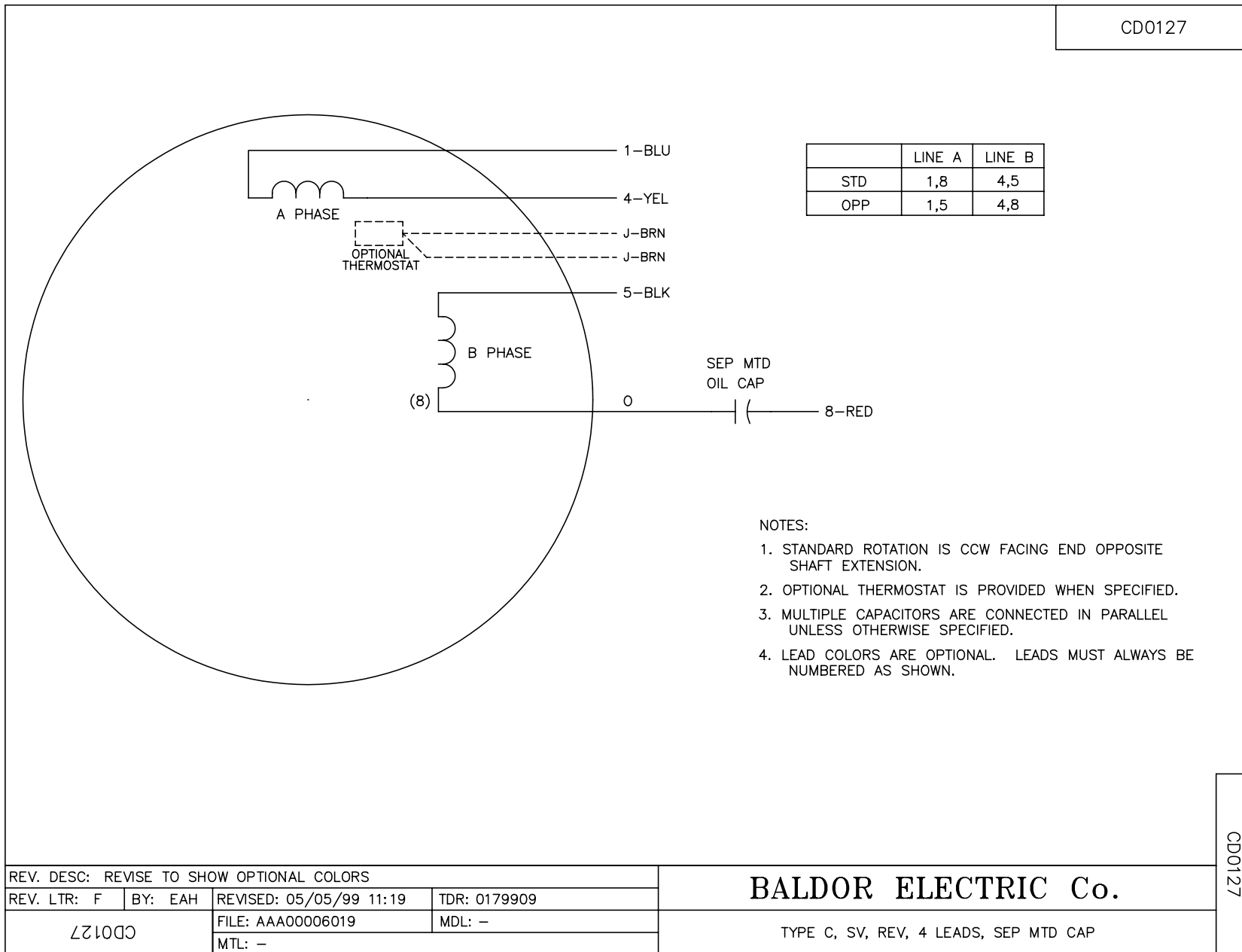
Performance Graph at 230V, 60Hz, 7.0HP Typical performance - Not guaranteed values





CUST. NAME		CUST. P.O.		CERTIFIED BY		MODEL		INSUL		AMB							
H.P.		MTG		TYPE		R.P.M.		VOLTS		ENCL		PHASE		FREQ		FRAME	
REMARKS:												BALDOR ELECTRIC Co.		36F548			
REV: M FR EP WAS 36EP3200A37																	
87548		SCALE: .3		BY: BGM		REVISED: 10/06/97		STD HORZ 182-4TZ OPEN 36C (UNIV CROP DRYER)									
		FILE: AAA00004330		TDR: 0133185													

CD0127



REV. DESC: REVISE TO SHOW OPTIONAL COLORS			
REV. LTR: F	BY: EAH	REVISED: 05/05/99 11:19	TDR: 0179909
CD0127		FILE: AAA00006019	MDL: -
		MTL: -	

BALDOR ELECTRIC Co.

TYPE C, SV, REV, 4 LEADS, SEP MTD CAP

CD0127